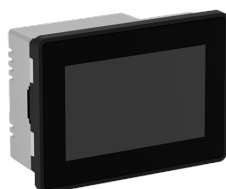


PRODUCT-DETAILS

CP6605

Control panel. 5" TFT multi-touch screen, 64 K colors, 800 x 480 pixel, Chromium Browser (CP6605)



General Information

Extended Product Type	CP6605
Product ID	1SAP560510R0001
ABB Type Designation	CP6605
EAN	4013614529610
Catalog Description	Control panel. 5" TFT multi-touch screen, 64 K colors, 800 x 480 pixel, Chromium Browser (CP6605)
Long Description	CP6605: CP600-Pro Control panel. 5" TFT multi-touch screen, 64 K colors, 800 x 480 pixel, Chromium Browser. PB610 applications.

Ordering

Country of Origin	Italy (IT) Germany (DE)
CN8	85371091
Invoice Description	Control panel. 5" TFT multi-touch screen, 64 K colors, 800 x 480 pixel, Chromium Browser (CP6605)
Made To Order	No
Minimum Order Quantity	1 piece
Order Multiple	1 piece
Selling Unit of Measure	piece

Dimensions

Product Net Weight	0.74 kg
Product Net Depth / Length	64 mm
Product Net Height	107 mm
Product Net Width	147 mm
Gross Weight	1.3 kg
Package Level 1 Depth / Length	265 mm
Package Level 1 Height	130 mm
Package Level 1 Width	190 mm
Package Level 1 Units	1 carton

Technical

Function	5" TFT multi-touch screen, 64 K colors, 800 x 480 pixel, Chromium Browser
Screen Size	5 in
Screen Color	65536 Colors
Screen Resolution	800 x 480 pixel
Display Type	TFT, capacitive multitouch
Number of Hardware Interfaces	Industrial Ethernet 2 Other 1 Parallel 0 RS-232 0 RS-422 0 RS-485 0 Serial TTY 0 USB 1 Wireless 0 PROFINET 0
Memory Size	60000 kB
Security	50
Input Voltage Type	DC
Degree of Protection	Front IP66
Supply Voltage	18 ... 32 V DC
Built-In Depth (t ₂)	52 mm
Ambient Air Temperature	Operation -20 ... +60 °C

Additional Information

Product Main Type	CP6605
Product Name	Control Panels

Classifications

eClass	27-33-02-01
EPLAN Catalog Tree	Electrical engineering / General / General
ETIM 8	EC001412 - Graphic panel
UNSPSC	32151703

Environmental

SCIP	242e2067-5af0-4439-a0e8-2e45f85eba25 Germany (DE)
WEEE B2C / B2B	Business To Business
WEEE Category	5. Small Equipment (No External Dimension More Than 50 cm)

Categories

PLC Automation → Control panels → CP600-Pro → Devices

